

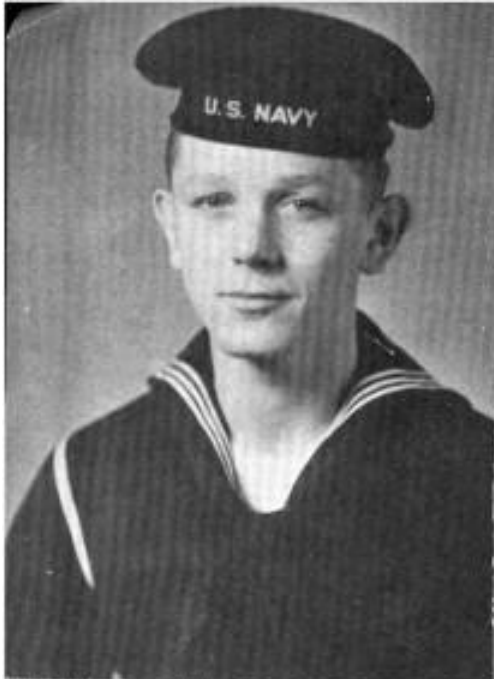
1947



THE RANGER

DEDICATION

This volume of The Ranger is very affectionately dedicated to our parents, whose loving care, guidance, and untiring efforts have made our graduation possible. Their active interest in our work has been an inspiration to us and has given us the courage to strive for things worth while. May this annual in some measure portray our sincere appreciation to you, Our Parents.



WORLD WAR II VETERANS



Eddie Zopp 2/c

Joe Alychick ARM 3/c



Frank Carmichael 2/c



Lt. William Moore



Sgt. David McClung



Sgt. Clyde Nolen



Fred Wankman, Adjutant Officer



Sgt. James Brockman

OUR VETERANS

We extend a most cordial welcome to our veterans who have returned to Rainelle High. Both the faculty and the student body have profited by their return. Not only have their happy smiles, friendly dispositions and cooperative attitudes added a cheerful note to our school, but the fact that the gigantic struggle in which they were involved has ceased is most comforting.

Eddie Zopp S1/c. Served 20 months in the Navy. Took boot training at Great Lakes. Then was stationed at the following places, Williamsburg, Va., Bayonne, New Jersey, San Burno and Treasure Island California. Twelve months of his service was overseas at Okinawa.

Joe Alychick ARM2/c. Served 3½ years in the Navy. Was stationed at Ellyson Field, Pensacola, Fla. Then served his overseas duties at the following places, Admiralty Islands, Australia, and the Philippines.

Frank Carmichael S2/c. Served 8 months and 22 days in the Navy. Was stationed at Maryland, and the Naval Air Station Norfolk, Va.

Lt. William Moore. Served 38 months in the Navy. A great deal which was spent overseas.

Sgt. David McClung. Served 38 months in the Army. Two years of which was spent in the Southern States. The remaining 14 months was spent in the European theater of War.

Sgt. Clyde Nolen. Served 22 months in the Army. Took basic training at Texas from there he went to Alabama. Then was transferred to Korea where he served 16 months.

Fred Workman Warrant Officer. Served from July 18, 1942 to Sept. 4, 1946, spent 26 months overseas, 16 months of this time was in the Aluetian Islands the other 10 months at Tenian. The remaining time was spent at the Separation Center Norfolk, Va.

Sgt. James Brackman. Served 20 months in the Army Air Corps. Being stationed at Kessler Field, Mississippi, Fort Mars, Fla.; Lincoln, Nebraska and Chanute Field, Illinois.

We also extend a friend greeting to former students of Rainelle High Who served in World War II. May we strive to uphold the ideals and principles for which they fought.

IN MEMORIAM

In loving remembrance, we desire to honor and pay our deepest respects to these former students of Rainelle High School, who made the supreme sacrifice in World War II.

Frank Bates

Frederick Bennett

Wilbur Bryant

J. R. Coleman

Carl Critchley

Francis Dorsey

John Page

Lloyd Smith

James Weber

Hollis Wright

Hosford Wright

Faculty



ROY COFFMAN
Principal

Marshall College--A. B.

West Virginia University
M. A.

HELEN GREEN

Librarian English

Berea College--A. B.



DAVID McCLUNG

Math. History

Glenville State College
A.B.

FRED WORKMAN

Math.

Marshall College



JANET CAMPBELL

English Physical Ed.

Greenbrier College
Concord State College
B. S.

Janet Campbell

JANET ECHOLS

English Civics

Greenbrier College
West Virginia University
A. B.



WILLIAM MOORE

Coach Phy. Ed. Geography

West Virginia University
M. S.
Glenville State
College A. B.--B. S.

VIRGINIA WEST

Biology, English
Marshall College



JAYNE WICKLINE

General Science
Chemistry

Concord State Teachers
College-A. B.

GRACE B. TOWNLEY

Latin I, II, English
Maryville College-A. B.



DORIS MAE MORGAN

Typing, Shorthand
Bookkeeping

Salem College-A. B.
Fairmont State Teachers
College-A. B.

MARIE COKELEY

Home Economics
West Virginia University
A. B.



RUTH FLESHMAN

Algebra, Geometry
Math, Journalism

Martha Washington College
A. B.

JEAN WEBER

American Government
World History
Marshall College-A. B.



MARY C. BARNETTE

Music, History

Berea College-A. B.
Western Teacher's College

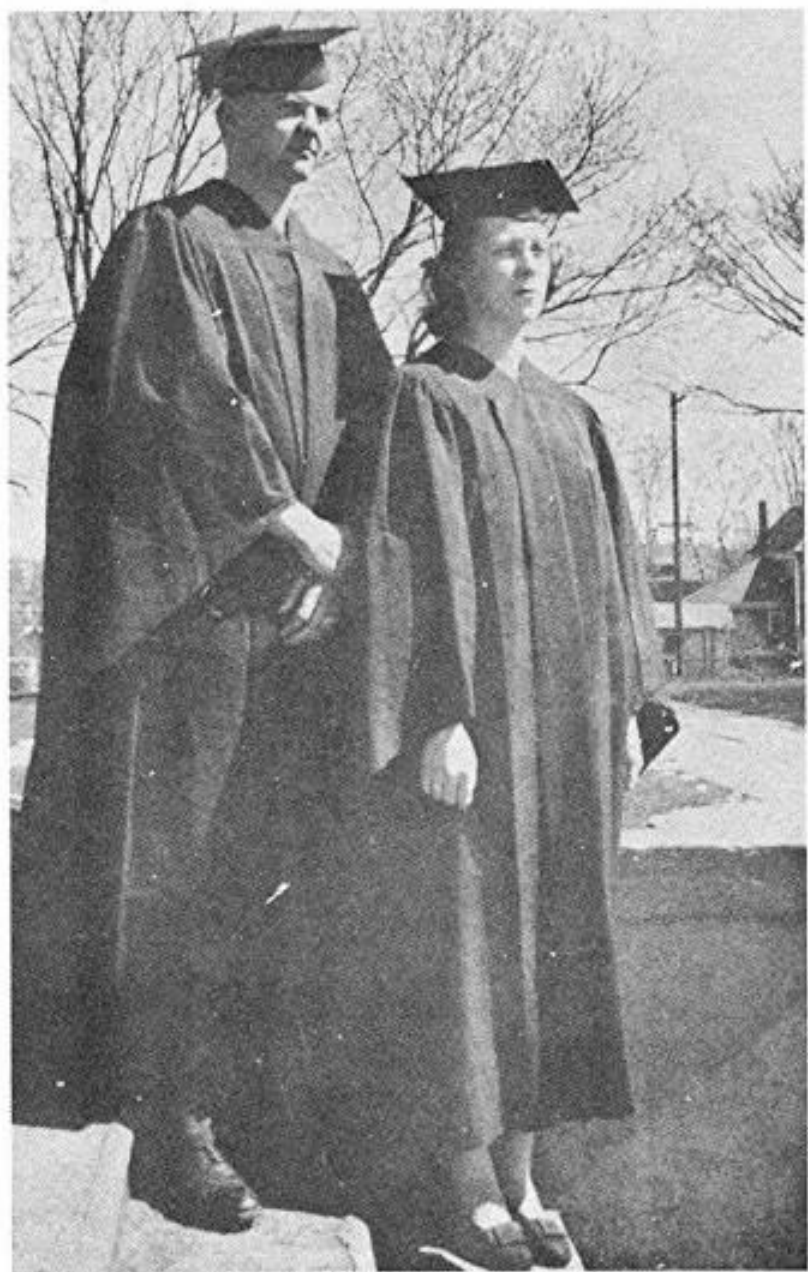
LEONE HOLSBERY

English
Marshall College-A. B.
West Virginia University
A. B.



CARL SHAWVER

Shop
T. and I. Certificate



SENIORS



CHARLES SPENCER

"Curly"

"Laugh and be merry for tomorrow you may die"

President of Senior Class '47; President of Biology Club '45; Industrial Trade School '45; Ranger Staff '47; Mountain Ranger Staff '47; Student Marshall '44-'47; Fire Suppression Crew '46; Jr. Sr. Banquet Committee '46; Band '39-'41.

Reeda Osborne



REEDA OSBORNE

"I therefore turn my clouds about
and always wear them inside out"

Glee Club '45-'46; Senior Play, "The Big Blow Up"; Jr. Sr. Banquet Program '46; Girls Class Tournament '41-'45; Secretary Sr. Class '47.

Mrs. Leon Brown
daughter - Beth - 1950



STANLEY SHRADER

"Buddy"

"All good things come in little packages"

Vice-President of Senior Class; Jr. Sr. Banquet Program '46; Vice President of Student Council '46; Jr. High Basketball '43-'44; Varsity Basketball '45-'47; Manager Football '46; Vice President of Biology Club; Quill and Scroll Society '47; Band '39-'41. Class Tournament '42-'47.



ALICE MAYE WALKER

"Walker"

"Our lovely queen seated upon a throne of love and
friendship."

Queen of Rainelle High School '46; Student Council '41-'43; Student Marshall '41-'47; Glee Club '44-'46; Pep Club '44-'47; Biology Club '44; National Honor Society '45-'47; Alumni Association '47; Library '43-'45; Jr. Sr. Banquet Comm. '46; Jr. Sr. Banquet Program '46; Princess of Eighth Grade; Vice-President of Pep Club '47; Escorted Seniors at Commencement Exercises '46. Salutatorian.

Mrs. Curtis Jones
son - 1949

Maye Walker



JAMES WILLARD

"Friday"

"To attempt is to do"

Student Council '44; Shop '44; Chief Marshall '46-'47; President of Junior Class '45-'46; Vice-President of Student Council '46; Jr. Sr. Banquet Program '46; Co-Capt. of Football Team '46; Football '44-'47; Capt. of Jr. Varsity Basketball '42-'43; Basketball '44-'47; Jr. High Basketball '42; Honorable Mention for All State (Football) '46; All Conference (Football) '46; Senior Play, "The Big Blow Up"; Editor of Mountain Ranger '46-'47; Sports Editor of Yearbook '46-'47.



MATTALEA CALES

"Tildy"

"She aims high and always hits her mark"

Princess-Eighth Grade; Sophomore Class Representative (Greenbank); Rooters Club (Greenbank); Glee Club '42-'47; Office Staff '46-'47; Senior Play, "The Big Blow Up"; Mountain Ranger Staff '47; Editor-in-chief of Ranger '47; Quill and Scroll '47; National Honor Society '47.



Eddie Zopp

EDWARD ZOPP

"Eddie"

"A ladies man if there ever was one"

Co-Capt. Football '46; Football '42-'46; Basketball '42-'44; President of Student Council '47; Honorable Mention for All State Football '46; Biology Club '42-'43; Coronation '42-'44; All Conference Football Team '46; Letterman's Club '42-'46; Ranger Staff '44; Shop '43-'44; Band '39-'41; Class Tournament '43-'47, Navy-20 months.



JEANETTE NUTTER

"Jeannie"

"In their hearts they made her a throne"

President Sophomore Class '44-'45; Princess '44; Cheerleader '45-'47; Sec. and treas. Junior Class '45; Jr. Sr. Banquet Program and Committee; Glee Club '46-'47; Coronation Group '46; Mountain Ranger Staff '47; Ass't. Editor Ranger '47; National Honor Society; Pep Club '44-'47; Quill and Scroll Society '47; Book League.

*most
nice*



NORMA JO TOWNLEY "Jo"

"Quiet in manner with an ability to succeed."

Student Marshall '43-'45; Pep Club '44-'45; Glee Club '44-'47; Biology '44; Jr. Sr. Banquet Program '46; National Honor Society '45-'47; Junior Choir '42-'47; Library '44-'45.



JOE ALYCHICK

"A man of thought and action"

Football (Oak Hill) '39-'41; Commercial Club (Oak Hill) '41-'42; Dramatics Club (Oak Hill) '41-'42; Senior Play "The Big Blow Up" '47; Mountain Ranger Staff '47; Ranger Staff '47; U. S. Navy '42-'45.



KITTY SUE HAYES "Kitten"

"Always happy and full of fun."

Biology Club '44-'45; Glee Club '44-'47; National Honor Society '45-'47; Jr. Sr. Banquet Comm. '46; Book League '45 Office Staff '47; Student Marshall '44-'46; Alumni Association '47.



LEWIS FRIAR "Louie"

"He loveth pleasure."

Football (Rupert) '43-'44; Operetta (Rupert) '44; Ranger Staff '47; Mountain Ranger Staff '47; Industrial Trade School '45-'46.



SYLVIA RIFFE "Syl"

"The word impossible is not in her dictionary."

Mountain Ranger Staff '47; Ranger Staff '47; Pep Club '43-'47; Student Marshall '44-'45; Quill and Scroll '47; Biology Club '44; Junior Choir '44-'46.



HOMER HEDRICK "Red"

"He looks the whole world in the face."

Chief Marshall '47; Student Council '47; Football '45-'47; Basketball '44-'47; Jr. Sr. Banquet Comm. '46; Community League '43-'44; Student Marshall '45.



Robert Gearheart

Mrs. Ray Neil
miss - 1951
BLANCHE HERBERT

"Herb"

"Her merry spirit's catching, cheerful;
always willing to help."

Student Council '44-'46; Student Marshall '44-'47; Glee Club '44-'47; Pep Club '44-'47; Biology '44-'45; Coronation Group '46; Jr. Sr. Banquet Program '46; Jr. Sr. Banquet Committee '46; Library '43-'45; Jr. Choir '42-'45; Ranger Staff '47; Mountain Ranger Staff '47; Quill and Scroll '47.

ROBERT GEARHEART

"Rabbit"

"A sense of humor and a habit of cheerfulness."

Jr. High Basketball '44; Jr. Varsity Basketball '45. Class Tournament '45-'46; Community League '43-'44-'45.

MARIE ROSEWELL

"Ree"

"She dances away the lonely hours."

Student Council '43-'44; Student Marshall '43-'47; Library '45-'47; Jr. Sr. Banquet Committee '46; Coronation Group '46; Jr. Sr. Banquet Program '46; Glee Club '44-'47.

Mrs. Curtis Scott
daughter - Kandi - 1948
son - Bob - 1950

BENNY NAPIER

"Ben"

"A little nonsense now and then, is relished by the best of men."

Sr. Play "The Big Blow Up"; Marshall '41-'46; Sec. and Treas. Sophomore Class; Community League '42; Twin City League '43.

MARGARET ANN GRIFFITH

"Midge"

"Pretty to walk with and pleasant to think of."

Princess, Seventh Grade '41; Glee Club '44-'47; Jr. Sr. Banquet Committee '46; Coronation Group '46; Student Marshall '43-'46; National Honor Society '46-'47.

Mrs. Bob Altier
daughter - 1950

CLYDE NOLEN

"Phil"

"High in spirit with manners plus."

National Honor Society '47, Army-22 months.

Philby Nolen





*Good Luck
"Kay"*



LACY SANFORD

"Act well your part, there all the honor lies;"

Football '45-'47; Jr. Varsity Basketball '45-'46; Biology Club '45; Jr. Sr. Banquet Program '46; Jr. Sr. Banquet Comm. '46; Student Marshall '44-'46; Community League '43-'44; Class tournament '43-'47; Lettermen's Club '45-'47; Coronation Program '46. National Honor Society '47.

KATHERINE BROWN

"Kay"

"Such folks make this land."

Student Marshall '44-'46; Glee Club '44-'47; Coronation Groups '46; Mountain Ranger Staff '47; Ranger Staff '47; Senior Play, "The Big Blow Up."

*Mrs. Buck Buchanan
daughter - 1949*

MAXWELL SIMMS

"Blackie"

"Full of life, full of fun and a good word for everyone."

BETTY WALKUP

"Bet"

"The smiles we wear make sunshine everywhere."

Glee Club (Toledo, Ohio) '44; Girls Athletic Society (Toledo, Ohio) '44-'45; Home Ec. Club (Toledo, Ohio) '44; Office Staff '47; Glee Club '47; Basketball Tournament '46.

*Mrs. Lincher
baby boy 1949*

EUGENE GODDARD

"Tubby"

"He vigorously pursues all that he undertakes."

Shop '44-'46; Student Marshall '46-'47; National Honor Society '46-'47; Jr. Sr. Banquet Comm. '46.

ARBUTUS VANCE

"Booky"

"A girl who laughs and talks away the vacant hours."

Ranger Staff '47; Mountain Ranger Staff '47; Student Marshall '47; Band '41-'43; Typing Award '46; Class Tournament '45-'46.



MURIAL BRYANT

"Bucky"

"Sober, silent, industrious too, he always does what he is ask to do."

Jr. High Basketball '42-43; Twin City Softball League '45-46; Student Marshall '47; Basketball '47; Shop '43-44.



WYNOLA LEPLY

"Winnie"

"Short, friendly, and nice to know."

Glee Club '44-47; Year book Follies '41; Ranger Staff '47; Mountain Ranger Staff '47; Jr. Sr. Banquet Comm. '46; Pep Club '44-45; Student Marshall '44-47; "Tumbling Exhibition '44."

DENZIL O'DELL

"Casey"

"Much study is wearisome to the flesh."

Shop '46-47; Class tournament '43-44; Fire Suppression Class '45-46; Community League '44-45.

PEARL BRADLEY

"Sis"

"An odd character, she studies."

Glee Club '44-47; Quill and Scroll Society '47; Mountain Ranger Staff '47; Ranger Staff '47; National Honor Society '47.

JAMES BRACKMAN

"Dude"

"He loveth pleasure."

Football '44-45; Student Council '44-46; Shop '43-44; Community League '43; Army-18 months.

JOAN QUICK

"Joanie"

"She's peppy, nice and sweet; the kind one likes to meet."

Girl's Basketball Tournament '46; Senior Play (The Big Blow Up); Band '40-43; Glee Club '44-47; Pep Club '45-47.



Flossie Miller
Princess
1946

FLOSSIE MILLER

"Her heart directs her way."

Glee Club '45-'47; Mountain Ranger Staff '47; Ranger Staff '47.



DARRELL GUTSHALL

"Frankie"

"A smiling boy with personality to boot."

Football '46; Community League '44-'45.



EVELYN STALEY

"Evaleener"

"Full of fun as the month of May."

Glee Club '43-'47; Senior Play "The Big Blow Up". Class tournament '46.



CHARLES PACK

"Charlie"

"He can, because he thinks he can."

Shop '45-'46; Varsity Club '46; Community League '44-'45; Class tournament '43-'44; Football '44-'46.



ERNESTINE STALEY

"Teeny"

"And life's worth while if you smile."

Princess of Junior Class '46; Glee Club '44-'47; Softball Team '43-'44; Office Staff '47.

Best of Luck Always
Ernestine Staley



ORLAND JONES

"Morty"

"Just what we do will count."

Football '45-'46; Jr. Varsity Basketball '45-'46; Stage Manager of Senior Play; Community League '43-'44-'45.

Orland Jones



*Marguerite Rickman
(Glee Club & friends)*

Mrs. Sunny Sturman

MARGUERITE RICKMAN "Rick"

"An athlete and a good friend all in one."

Basketball '43-'47 Glee Club '44-'47.



Roy Estep

*married a Danish girl
daughter - 1950*

ROY ESTEP

"Blondie"

"His manner alone would have gained him our hearts."

Band '39-'43.



"Stub"

JUNE STOUTAMYER "Stub"

daughter - Vickie

"Little, but she fills a lot of space among those who know her."

Jr. Sr. Banquet Committee; Glee Club '45-'46 Class Tournament; Pep Club '47; Mountain Ranger Staff '46-'47; Ranger Staff '47.



BILLIE REED "Bill"

"One who will always be ready to support good things."

Shop '44-'46; Town League.



MURIEL COZORT

"Kind and gentle always willing to lend a helping hand."

Biology Club '44-'45; Alumni Association '46-'47; Library '46-'47; Glee Club '45-'47; Book League '45-'46

*Mrs. ?
son - 1950*



GALE REED

"Silence is one great art of conservation."

Shop '44-'46.



Patsy Martin

Mrs. PATSY MARTIN

"Pat"

"She is often kind and wise."

Biology Club 44; Glee Club '43-'47; National Honor Society '45-'47; Senior Play, "The Big Blow Up"; Jr. Sr. Banquet Committee '45-'46.



AUBREY RICKMAN

"Men of few words are best men."



Vada Lou Nolen

VADA NOLEN

"Sis"

"She is gentle and mild."

Glee Club '43-'47.



DELBERT GARRISON

"Bus"

"Some think the world is made for fun and frolic, and so do I."

Shop '45-'46; Jr. High Basketball '44; Community League '44-'45; Fire Suppression Class '45-'46-'47; Class Tournament '43-'44; Jr. Varsity '44.



DELORES BRIDGES

"Nitzie"

"She has gentle thoughts and calm desires."

Basketball (Crichton) '43-'44; Glee Club '46-'47; Senior Play, "The Big Blow Up."

Mr. Bill - Britton
June 1948

J. B. HAYES

"Noble deeds that are concealed are most esteemed."

Shop '45-'47; National Honor Society '46-'47; Student Marshall '45-'46.





HAROLD FLESHMAN

"The smiling face of a happy boy."

Jr. High Basketball '43-'44; Jr. Varsity Basketball '45; Mountain Ranger Staff '47; Community League '44-'45; Class Tournament '43-'44-'45.



RUBY SANFORD

"Sanford"

"Her heart is like the moon, there's a man in it"

Student Marshall '45-'46; Library '44-'47; Pep Club '46; Book League '45.

*Mr. Jay Smith
daughter - 1949*

CONWELL McCLUNG

"Connie"

"Happy go lucky, bubbling over with wit."

Shop '43-'45.



NORMA KENNEY

"Poggie"

"A happy girl and free from care."

Biology Club '45; Book League '45-'46; Library '47; Basketball '44-'47; Glee Club '44-'47.

*Best Wishes
Norma*

JOHN WEBB

"Jack"

"Worry and I are strangers."

Student Marshall '47; Community League '43-'45.



MILDRED UNDERWOOD

"Midge"

"Sweet her manner, and quiet her way."

Band '41-'43; Glee Club '44-'47; Jr. Sr. Banquet Comm. '46; Girls' class tournament '41-'46; Softball '44-'46.

*Best Wishes
Midge
Underwood*



*Best of Luck
Hildreth Corron.*



HILDRETH CORRON "Buford"

"I may seem quiet but I'm thinking all the same."

Glee Club '44-'47; Library '47.

*Mrs. ? Deck
daughter born - '48*



RUBY JEAN LOUDERMILK

"She has darling fancies of her own."

Office Staff '47; Glee Club '44-'47; Jr. Sr. Banquet Program and Committee '45-'46; Basketball '44-'46; Sec. and Treas. Sophomore Class '44-'45; Princess '44; Student Marshall '43-'44-'45; Student Council '42-'43.

Mrs. Keith Carr
WYLENE CARR

"Sis"

"A good disposition is more envied than gold."

Glee Club '43-'47; Book League '45-'46; Jr. Sr. Banquet Program and Committee '46.

Mrs. ?



Wylene Carr

HAZEL WILLIAMS "Wimpy"

daughter - Brenda - 1949
"Quietness is an asset to beauty."

Glee Club '45-'47; Softball '43-'44; Letter Club (Williamsburg) '41-'42; Home Ec. Club (Williamsburg) '41-'42; Jr. Sr. Banquet Committee '46.

ELIZABETH GARDNER "Betty"

"Before my face are friends that know my heart."

Operetta, "Good as Gold" (Loudenville, Ohio); Library (Loudenville); Glee Club (Alliance, Ohio); Library '46-'47.



Hazel Williams



CLASS HISTORY

Time: September, 1943-'44

Place: Rainelle High School Auditorium

Act I

Characters:

Mrs. Hall	Douglas Smith	Miss Sturm
Miss Flanagan	Mattalea Cales	

Miss Flanagan and Mrs. Hall presided as Freshman sponsors with a cast of eighty-six players. Mrs. Hall left before the year was finished and was replaced by Miss Sturm.

Douglas Smith was elected president and Mattalea Cales, vice president.

Act II

Characters:

Mrs. Fleshman	Jeanette Nutter	Frank Mallette
Miss Weber	Conwell McClung	Ruby Jean Loudermilk
Douglas Smith	Bennie Napier	

Mrs. Fleshman and Miss Weber presided as the cast's supervisors who were now Sophomores. Seventy-six actors and actresses were enrolled.

Jeanette Nutter and Conwell McClung were elected presidents of the two home rooms. Douglas Smith and Frank Mallette were elected vice presidents. Ruby Jean Loudermilk and Bennie Napier, secretaries.

Act III

Time: September 1945-'46

Characters:

Mrs. Fleshman	James Willard	Jeanette Nutter
Miss Weber	Stanley Shrader	

Mrs. Fleshman and Miss Weber played the part of the Junior sponsors. The cast of characters this year consisted of sixty-four players.

James Willard played the role of president, Stanley Shrader, vice-president, and Jeanette Nutter, secretary.

Act IV

Time: September, 1946-'47

Characters:

Miss Green	Charles Spencer	James Willard
Miss Morgan	Stanley Shrader	Mattalea Cales
Reeda Osborne	Alice Maye Walker	

Miss Green and Miss Morgan presided as the Senior supervisors with a cast of sixty players.

Charles Spencer played the role of president in the last act with Stanley Shrader in the role of vice-president and Reeda Osborne as secretary.

Three big events of this act were the choosing of Alice Maye Walker as Queen of Rainelle High School, James Willard as Editor of the Mountain Ranger, and Mattalea Cales as Editor of The Ranger, 1947 yearbook.

However, the climax was reached when all of the players received their diplomas, May 23, 1947.

CLASS PROPHECY

I, Madame Know Nothing Vance, as I gaze in my crystal ball, can see the senior class of 1947 doing what comes naturally.

The fog is clearing and I see a little more clearly, First whom should I see but Blanche Herbert and Eddie Zopp happily married in Boston, Massachusetts.

Here I am now in Charleston, W. Va. Mattalea Cales is teaching school at Stonewall Jackson High, while her husband, Lacy Sanford slings hash at their home owned resturant. He has several of his classmates helping him, namely, John Webb, J. B. Hayes, and Murial Bryant.

Still going east I find Mildred Underwood and Vada Lou Nolan are living in the Old Maids' Home in Wheeling, W. Va.

I am moving backwards now. I am back to Charmco, W. Va. Here I see poor Kitty Sue Hayes crying along side the road and she has a sad story to tell. Bill and Gale Reed were fueuding in them thar' hills over her and they shot each other and now Kitty Sue is a widow.

Going back east again to Williamsburg, here Benny Napier has a chain of service stations, assisted by Charles Pack, Robert Gearhart, Eugene Goddard, and Roy Estep. His wife, Elizabeth Gardner, spends her time knitting baby clothes.

I am going out of the state of West Virginia to Washington D. C. Here, I find Delbert Garrison and Denzil O'Dell chief executives at the Capitol with Harold Fleshman and Joe Alychick as their assistants.

Here I am at the Lux Theatre in Hollywood, Calif. The picture here tonight was written by Stanley Shrader and directed by Pearl Bradley starring Norma Kenney and Betty Walkup. Other classmates, who have risen to stardom are Muriel Cozort, Marguerite Rickman, Patsy Martin, Alice Maye Walker, and Kay Brown.

I am going back across the United States to New York City where I find Charles Spencer, a noted scientist, also President of World Wide Atomic Energy Commission, dictating to his lovely wife and secretary, Jeanette Nutter.



CLASS PROPHECY, Continued

Running back to Quinwood, W. Va. I see the big political "boss", James Willard. After luring him into marriage Reeda Osborne divorced him and is now private secretary for Homer Hedrick.

I find James Brackman is a successful man in Charleston. His wife, Margaret Ann Griffith, stays home and keeps the home fires burning for him.

June Stoutamyer and Darrell Gutshall have broken their engagement as Orland Jones steps into the picture.

Aubrey Rickman and Joan Quick have announced their engagement, after a friendship of about 10 years.

Flossie Miller and Hildreth Corron are teaching school in Fayetteville, W. Va.

"Winnie" Lepley is living in a trallor beside West Virginia University.

David Cole made a very bad mistake. He married Ernestine instead of Evelyn Staley. Poor Evelyn is a widow.

Delores Bridges, Sylvia Riffe, and Wylene Carr are working in a factory in Detroit, Mich.

Norma Jo Townley and Hazel Williams are partners in a New York Style Shop.

Ruby Jean Sanford and Marie Rosewell are doing very well keeping house and playing nurse maid.

Maxwell Simms and Conwell McClung finished their last year in medical school.

Last, but not least, I find "Booky" Vance making her entrance into society at a ball given in honor of the President of the U. S. She was escorted by Commander Lewis Friar of the United States Navy.



CLASS WILL

We, the seniors of 1947, being in full possession of our mental faculties and realizing that we are about to take our departure from Rainelle High School, do hereby make and publish, this, our last will and testament.

ARTICLE I

To Mr. Coffman, we will all of our wealth, with which to build a modern gymnasium by the new Athletic field.

We bequeath to our faithful faculty, who has been amazed at our brilliance, the privilege of using all they have learned from us, as they teach the class of '48.

ARTICLE II

To the Juniors, we leave the solemn duty of upholding the senior dignity as best they can.

We will to the Sophomores and Freshmen, our ability to flatter teachers and thus make better grades.

ARTICLE III

I, Mattalea Cales, will my love for arguments in Government class to Delbert Carr.

I, Pearl Bradley, will my love for Public Speaking to Geraldine Simms.

I, Mildred Underwood, will my ability to play basketball to Arlene Pack.

I, Kitty Sue Hayes, will all my undesirables to anyone who wants them.

I, Elizabeth Ann Gardner, will my little feet to Betty Lee Cumby and absentees to Patsy Gardner.

I, Vada Lou Nolen, will my seat on the school bus to anyone that gets to it first.

I, Charles Pack, will my ability in Government to Russ Mann.

I, Norma Kenney, will my beautiful blonde hair to Mona Gray Harris.

I, Stanley Shrader, will my long walk to school to Robert Martin.

I, Robert Gearheart, will my pet flea, "Oscar", to Joe Webb.

I, Betty Walkup, will my tallness to "Punch" Flint.

I, Roy Estep, will my seat in Government to any unlucky person.

I, Harold Fleshman, will my love for typing to anyone who likes Miss Morgan for a teacher.

I, Booky Vance, will my typing ability to Roy Fitzwater.

I, Eddie Zopp, will my football bruises to "Big Burly Betty" Hackworth Jr.

I, Marguerite Rickman, will my ability to play basketball to Rosetta Copen.

I, June Stoutamyer, will my shortness to Wanda Slaven.

I, Jeanette Nutter, will my position as cheerleader to some lucky Sophomore.

I, Darrell Gutshall, will my curly hair to Joe Wilt.

I, Delores Bridges, will my love for Crichton to Wanda May.

I, Wylene Carr, will my love for Latin to anyone unfortunate enough to take it.

I, Delbert Garrison, will my love to talk to Bob Flint.

I, Denzil O'Dell, will my conduct to Grover Osborne.

I, Reeda Osborne, will my love for Government and Music to Marjory Neal.

I, James Willard, will Peggy Levisay to Roy Fitzwater and "Buck" Persinger.

I, Joe Alychick, will my love for school to Robert Martin.

I, Norma Jo Townley, will my seat in Mrs. Fleshman's math classes to my sister Doris and my height to anyone who needs it.

I, Clyde Nolen, will my ability to dance to "Buckwheat" Smith.

I, Maxwell Simms, will my love for string music to Eldridge Osborne.

I, Muriel Cozort, will my typing book to anyone with the patience of Job.

I, Homer Hedrick, will my curly hair to "Buckwheat" Smith.

I, Alice May Walker, will my ability to make A's to Bill Fox and Dimples to some Jr.

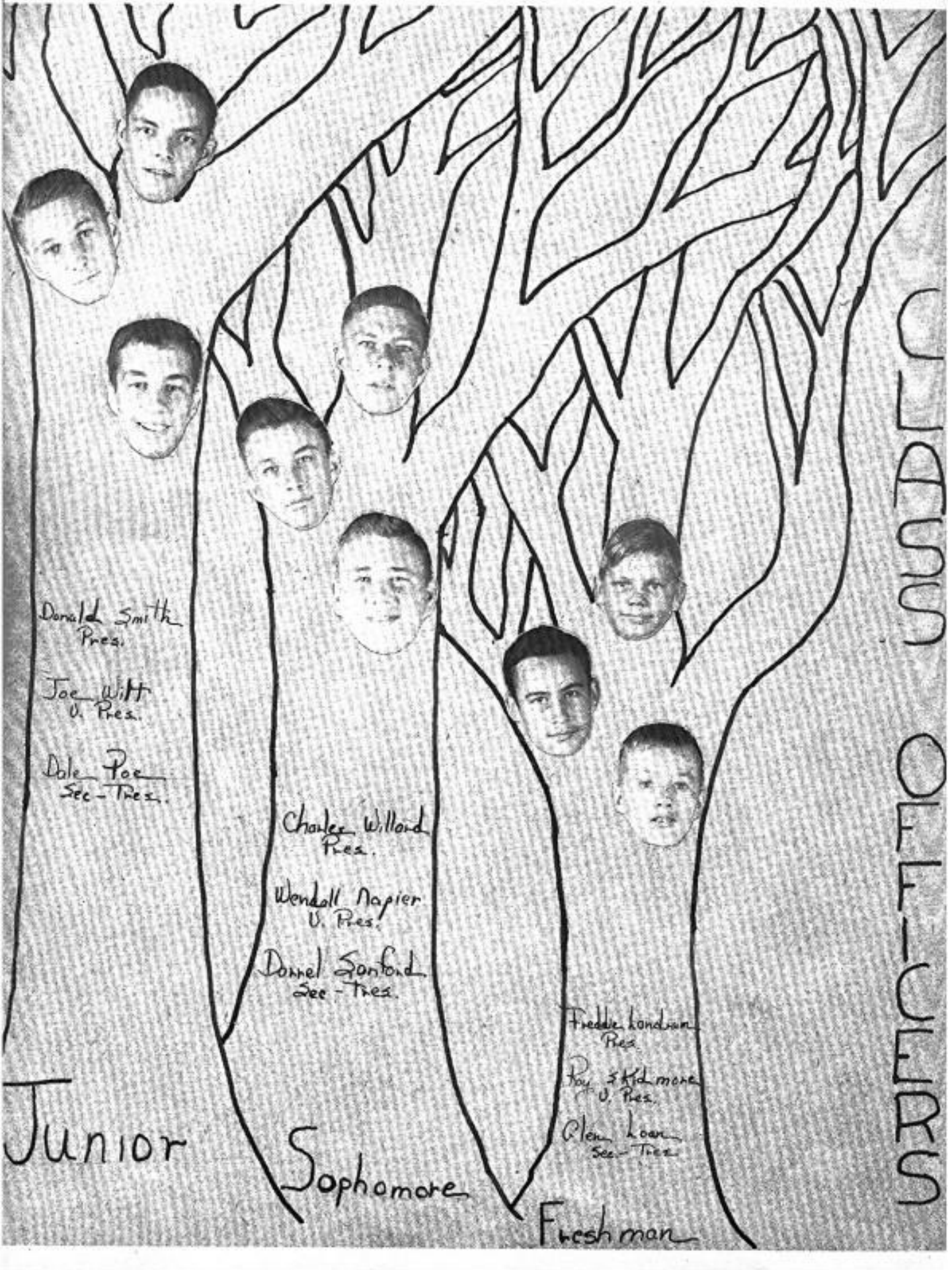
I, Conwell McClung, will my seat by Miss Weber's desk in Government class to Arnold Moten.

I, "Kay" Brown, will my typing to anyone who can keep up with the class.
 I, Hazel Williams, will my seat in music to Bonnie Neal.
 I, Ruby Jean Sanford, will my love for Phys. Ed., willed to me by Margaret Spencer, to Mona Gray Harris.
 I, Ruby Jean Loudermilk, will my thick hair to Wanda Slaven.
 I, Flossie Miller, will my seat in Glee Club to anyone who loves music.
 We, Ernestine and Evelyn Staley, will our identical looks to any twins that might come to R. H. S.
 I, Hildreth Corron, will my love for typing to Margie Reed.
 I, Bill Reed, will my red hair to Jean Weber.
 I, Charles Spencer, will my T-Model to anyone who can keep it running.
 I, Sylvia Riffe, will my height to the next senior of Rainelle High that is shorter than I am.
 I, Patsy Ocheltree Martin, will my love for shorthand to Fannie Johnson.
 I, Eugene Goddard, will my ability for Geometry to Browning Davis.
 I, Marie Rosewell, will my dancing ability to my brother Billie.
 I, Orland Jones, will my love for football to my brother Wallace.
 I, Lewis Friar, will my love for wine, women, and song to anyone who loves it as I do.
 I, Blanche Herbert, will my typing paper to anyone who has been taking it.
 I, "Winnie" Lepley, will "Dogg" to Dorothy Gutshall.
 I, Margaret Ann Griffith, will my ability to make good grades to Bill Fox.
 I, Bennie Napier, will my love for T-Model to Windell.
 I, John Webb, will my car to my brother Joe to bring the kids to school next year.
 I, Lacy Sanford, will my love for football to my brother Darrell.
 I, Gale Reed, will my seat in English to anyone who wants it.
 I, Bucky Bryant, will my ability in football to "Bucky" Persinger.

Hereunto we have set our hand and seal This twenty-third day of May, one thousand nine-hundred and forty seven.

Charles Spencer, Pres.
 Stanley Shrader, Vice Pres.
 Reeda Osborne, Sec. - Treas.
 Flossie Miller, Secretary





Donald Smith
Pres.

Joe Witt
V. Pres.

Dale Poe
Sec. - Treas.

Charles Willard
Pres.

Wendell Napier
V. Pres.

Donnel Sanford
Sec. - Treas.

Freddie Landrum
Pres.

Ray Skidmore
V. Pres.

Allen Loan
Sec. - Treas.

Junior

Sophomore

Freshman

STUDENT COUNCIL



THE JUNIOR CLASS

- Row 1. Dale Poe, Mona Gray Harris, Lawrence Persinger, Ethel McDaniel, Arnold Moten, Wanda Slaven, Donald Smith, Joan Bradley.
- Row 2. Marjory Neal, Fredrick Gray, Betty June Altizer, Joe Webb, Peggy Winnings, Bennie Black, Nancie Martin, Roy Fitzwater.
- Row 3. Joe Wilt, Peggy Levisay, Erman Callison, Polly McClung, Jack Burdette, Louise Martin, James Buchanan, Lena Morrison.
- Row 4. Betty Powers, Joe Young, Rosetta Copen, Bob Martin, Betty Cumby, James Posten, Wandring Roach, Marvin Slaven.
- Row 5. Charles Wheeling, Pearl Carr, Edwin Weikle, Joan Augustine, Hollie McCutcheon, Mollie Jackson, Lenard Egnor, Twyla Cain.
- Row 6. Helen Harris, Walter Hackworth, Mary Shearl, Russell Mann, Gilda Reed, Bill Fox, Betty Wiseman, Tracy Hamilton.
- Row 7. Fannie Johnson, Ruby Gilbert, Mary Louise Clingbell, Dorothy Gutshall, Geraldine Simms, Norma Jean Yaden, Nellie Waugh.



THE SOPHOMORE CLASS

- Row 1. Margaret Davis, Charles Willard, Rosalie Osborne, Theda Reed, Doris Townley, Ronald Keavney, Beryl Johnson, Bob Flint.
- Row 2. Ellard Lynch, Peggy Evans, Wendell Napier, Mayona Astin, Browning Davis, Catherine Micossi, Kenneth Lynch, Ruth Anderson.
- Row 3. Nina Kenny, Eddie Myers, Margaret Hedrick, Glen Gutshall, Mary Lou Hundly, Harold Carmichael, Mary June Smith, Bobby Lepley.
- Row 4. Carl Bobbitt, Euela Flint, Darrel Sanford, Clista Pack, Clair Trinkley, Thelma Phillips, Bill Hallett, Ruth Riffe.
- Row 5. Wanda Willard, Raleigh Sanford, Judith Hanna, Bobby Keeney, Margie Bunn, Herbert May, Martha Martin, Elmer Smith.
- Row 6. James Dixon, Bonny Furey, Jack Huffman, Wanda May, Delbert Carr, Virginia Grose, Gen. Wilson, Freda Roberts.
- Row 7. Bobby Wilt, John Simpson, Arlene Pack, Ray Nutter, Catherine Egnor, James Smith, Drema Wyatt, Evelyn King.
- Row 8. Patsy Gardner, Margaret Adkins, Nathalie Callison, Margie Reed, Ruth Carr, Heler Micossi.



THE FRESHMAN CLASS

- Row 1. Nell Phillips, Jennings Begley, Ruby Sears, Fred Underwood, Alice Gilbert, Eldridge Osborne, Blanche Collins, Kenneth Spencer, Betty Yaden.
- Row 2. Jackie Fox, Lora Ballingee, James Patterson, Mascil Osborne, Clifford Fleschman, Nancy Davis, Amos Ross, Reba Barnette, Bill Smith.
- Row 3. Betty Furey, Arthur Hiser, Mary Estep, Keith Goddard, Mary Bowyer, Keith Chapman, Verna Hughart, Billy Griffis, Geneva Moten.
- Row 4. Don Harold, Emelle Callison, Roy Skidmore, Louise Gilkerson, Charles Nolen, Patsy Dalton, Argie Hager, June Sheaves, Billy Rosewell.
- Row 5. Gloria Patton, James Snuffer, Ruby Smith, Fred Barker, Adriene Camp, Dickie Walker, Lilly Dickson, Bill Jackson, Beulah Hamilton.
- Row 6. Lonzo Martin, Delores Bobbitt, Charles Shrader, Frances Tignor, Charles Taylor, Alma Eagle, Herbert Simms, Katy Jean Adkins, Edgar Adkins.
- Row 7. Eunice Dillon, Grover Osborne, Laura Buchanan, Carl Roach, Hilda Osborne, Jack Hyton, Roberta Bottomly, Victor Lowers, Wanda McIntire.
- Row 8. John Manspile, Joanne Fink, George Loan, Ada Belle Mitchell, James Goddard, Maxine Curd, Richie Morrello, Bonny Martin, Richard Fleschman.
- Row 9. Bill Smith, Billie Jack Walker, Freddie Landrum, Jimmie Arbaugh, Bonnie Neal, Raymond Skidmore, Larry Hayes, Winford Gentry, Dee Gladwell.



THE EIGHTH GRADE

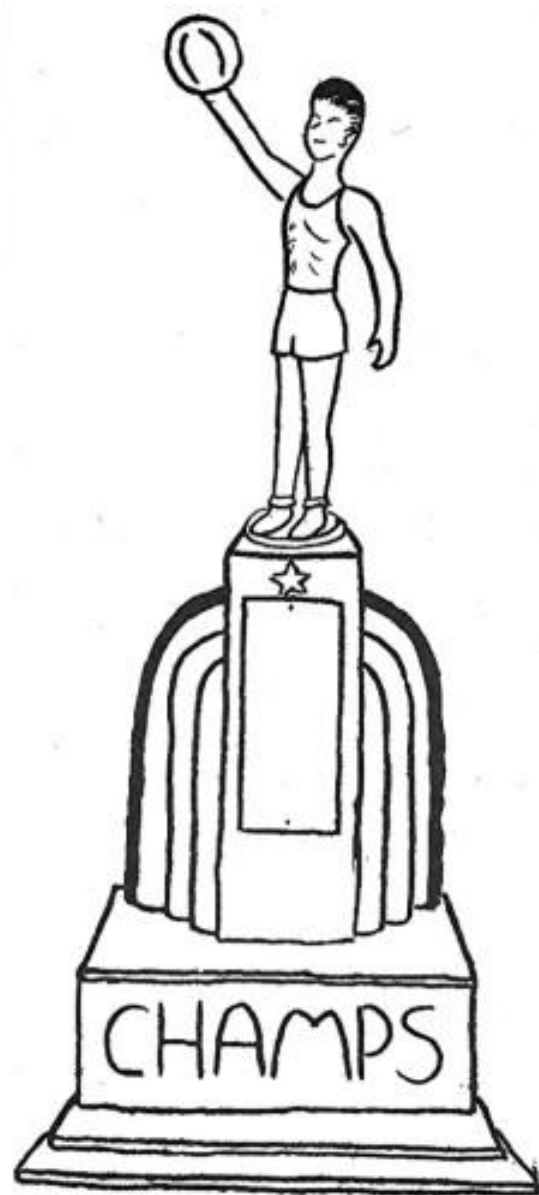
- Row 1. Paul Gutshall, Mary Lowell Gray, Elinor Sanford, Dick Shultz, Ethel Mullenax, Darrell O'Dell, Nancy Altizer, Richard Jones.
- Row 2. Jo Ann Keaveney, Carl Gibson, Ramona Gearhart, Detward Woollard, Barbara Manspile, James Manspile, Lyla Hylton, James King, Darless Houchins.
- Row 3. Grandille Robinson, Margaret Ann Fox, Sidney Roberts, Reva Fitzwater, Roy Gilkeson, Joan Burgess, Charles Daff, Betty Black, Randolph Loudermilk.
- Row 4. Charlotte Williams, Perry Flesham, Emma Belle Bowles, Robert Friar, Betty Wilt, Edward McCall, Louise Brammer, Maynard Slaven, Louise Clinebell.
- Row 5. Clydell Bowles, Janice Herahberger, Bud Smith, Janice Carmichael, Kenneth Lively, Lucy Powers, Neal McEachron, Doris Shaffer, Charles Tuck.
- Row 6. Edrice Cumby, Richard Corron, Frances Osborne, Jimmy Wratchford, Rita Deck, Donald Sanford, Hilda Eagle, John Vestal, Imelda Posten.
- Row 7. Hilda Ryder, Gloria Hudkins, Richard Lawson, Wilda Martin, Donald Bunn, Gloria Patton, Fred Blair, Betty Carter, Whorlen Martin.
- Row 8. Roy Campbell, Arbutus Steele, Johnny Morrison, Helen Hundley, Billy Eagle, Janet Griffith, Howard Neal, Jean Ellison, George Wallace.
- Row 9. Ramona Campbell, Wallace Jones, Margaret Hundley, Charles Sanford, Imogene Ratliff, Harold Wheeling, Coraleen Hallett, James McCall, Gilda Jody.
- Row 10. Bill Martin, Elizabeth Fink, James Decker, Mary Minter Jarrett.



THE SEVENTH GRADE

- Row 1. Jimmie Wilt, Arthens Dotson, Kenneth Napier, Sylvia Kirby, Franklin Hume, Lillian Hayes, Edward Goddard, Janet Simms.
- Row 2. Jean Bennett, Jimmie Callison, Juanita Patterson, Billy Cales, Joyce Barker, Ronald Boyd, Geneva Underwood, Don Livey.
- Row 3. Dickie Jarrett, Ann Carr, Ed. Hinkle, Pauline Collins, Franklin Surbaugh, Violet Dixon, Jimmie Davis, Wilma Taylor.
- Row 4. Shirley Cutlip, Keith Evans, Katherine Morrello, Jackie Bottomly, Carolyn Lowers, Charles Bradley, Betty Martin, Darrell Kincaid.
- Row 5. Joe Vail, Helen Corrans, Raymond Stoutamyer, Nelda Goddard, Jack Vipperman, Delores Bunn, Darius Copen, Maxine Buchanan.
- Row 6. Wilma Falls, Randall Richmond, Jean Hume, Richard Pack, Betty Cales, Bobby Dillon, Alice Phillips, Billy Joe Carmichael.
- Row 7. George Baker, Catherine Egnor, Benny Lepley, Janet Salisbury, Jimmie Miller, Frances Booth, Billy Carter, Jo Ann Osborne.
- Row 8. Ginger Burns, Harvey Fortner, Mary Estep, Floyd Neff, Donna J. Nutter, Bobby Parr, Helen Astin, Junior Richmond.
- Row 9. Billy Yates, Yvonne Scott, Franklin White, Hildreth Kincaid.

Athletics

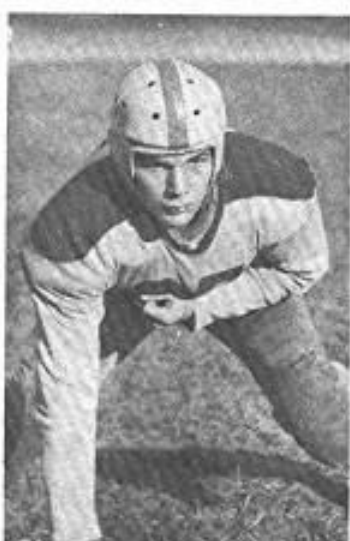


CO-CAPTAIN



JAMES
WILLARD

GUARD



CHARLES
PACK

TACKLE



CHARLES
WHEELING

END

FOOTBALL



DONALD
SMITH

CENTER



CHARLES
PACK

GUARD



HOMER
HEDRICK

TACKLE



EUGENE
PERSINGER

END

"Bucky" Persinger--end and a junior; played outstanding ball and was a good defensive end as well as offensive.

"Bucky" Bryant--quarter back and a senior; "Bucky" didn't carry the ball but was outstanding as a blocking back and a good line backer.

Charles Pack--guard and a senior. Charles was converted from center to regular guard duty in the middle of the season. He has thrown many opponents for a loss.

Charles Wheeling--a junior and an outstanding player from the tackle position will be back next year to give the opposition more headaches.

Homer "Sonny" Hedrick--a senior, played at the other tackle position; was one of the best tackles in the country.

James "Friday" Willard--Co-Captain and 4 years a first string guard, played his last year for the Rangers. One of the best guards Rainelle ever had.

Eddie Zopp--Co-Captain and a returned war veteran, has played 3 years for the Rangers. He has been a star in the Ranger backfield all year. This is Eddie's last year.

Dale Poe--a junior, played halfback this year and was outstanding in broken field running. He was a substitute end last year.

Joe Wilt--a junior, played fullback and for his size is one of the finest fullbacks the Rangers have had.

Charles "Dutch" Willard--a sophomore, plays end; has two more years to go. Played outstanding ball at his end position, not many long gains with "Dutch" around.

"Buckwheat" Smith--a junior and center for the Rangers; a fine ball snapper and defensive center.



HALF BACK

DALE POE



FULL BACK

JOE WELT



HALF BACK

EDDIE NOPP



QUARTER BACK

MURAL BRYANT



FULL BACK

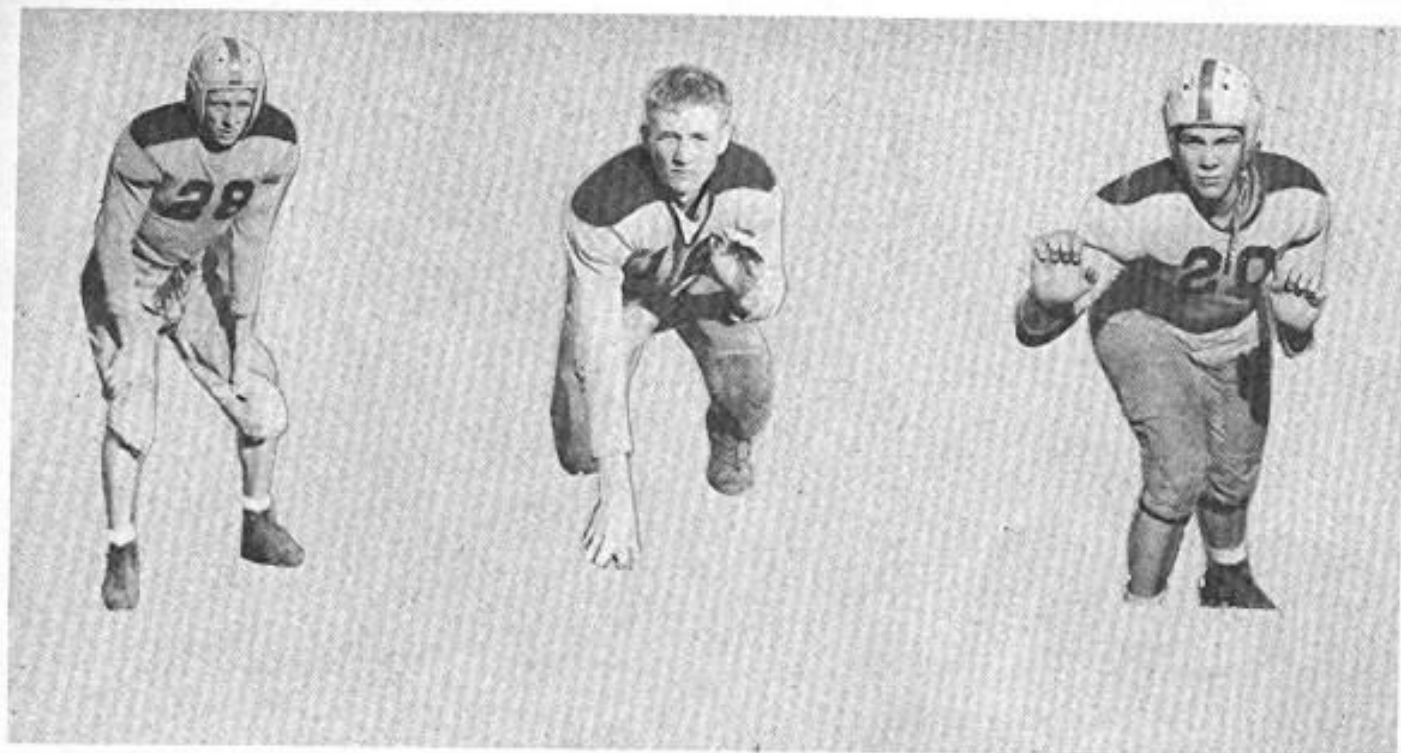
LACY SANFORD



HALF BACK

JOE YOUNG

CO-CAPTAIN



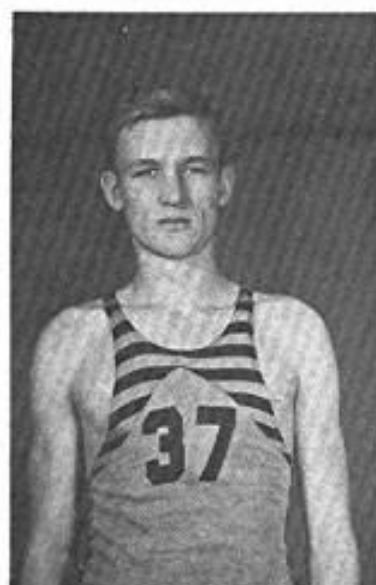
FOOTBALL TEAM

- Row 1. Russel Mann, Darrel Gutshall, Joe Young, Harold Carmichael, Donald Smith, Bucky Bryant, Roy Fitzwater.
- Row 2. Stanley Shrader-Manager, John Burdette, Charles Wheeling, Homer Hedrick, Charles "Dutch" Willard, Edwin Weikle, Lacy Sanford, Orland Jones, James Buchanan, Coach Moore.
- Row 3. Benny Black, Ed. Zopp, Dale Fox, Gene Wilson, Joe Wilt, Walter Hackworth, James "Friday" Willard, Charles Pack, Jack Huffman, Eugene Persinger.



J
A
M
E
S
W
I
L
L
A
R
D

GUARD



G
E
N
E
W
I
L
S
O
N

GUARD



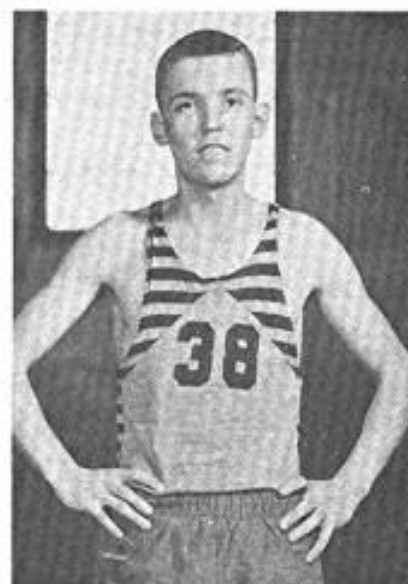
C
H
A
R
L
E
S
W
I
L
L
A
R
D

CENTER



D
A
L
E
P
O
E

FORWARD



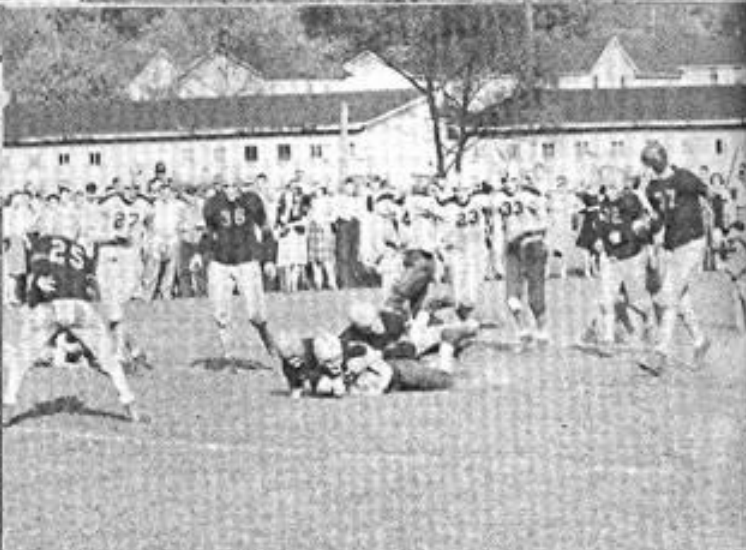
R
O
Y
F
I
T
Z
W
A
T
E
R

FORWARD



BASKETBALL TEAM

Row 1. James "Friday" Willard, Captain Dale Poe, Charles "Dutch" Willard, Gene Wilson, Charles Wheeling, Jack Huffman, Roy Fitzwater.
 Row 2. James Buchanan-Manager, Russel Mann, John Simpson, Wendell Napier, Bucky Bryant, Stanley Shrader, Coach Moore.





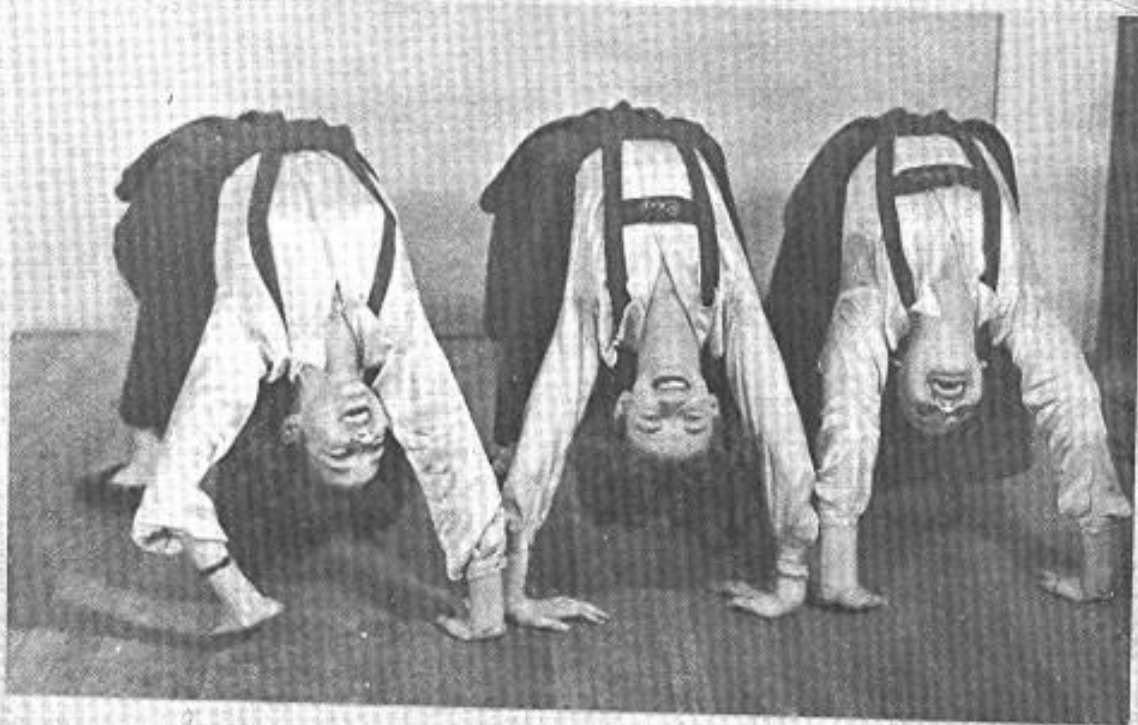
Peg L.



Jeonette



Peggy E.



BASKETBALL

"Friday" Willard--the only senior on the first team. Plays a great game from his guard position.

Dale Poe--Captain of the team is the leading scorer and the main stay of the squad. He plays forward.

Roy Fitzwater--the other forward is the man who hands the fast breaks. He is also a constant threat every time he handles the ball.

Charles Willard--plays center, teams with Wilson to take all the rebounds from the back boards.

Gene Wilson--teams with "Dutch" from his guard position; is the second highest scorer of the team. He is a sophomore along with "Dutch".

To date the team has won 6 and lost 3 games. The games lost were all out of county games.

BASKETBALL SCHEDULE

Jan. 3	Summersville	There
Jan. 7	Crichton	Here
Jan. 9	Hinton	Here
Jan. 11	Rupert	There
Jan. 14	Talcott	Here
Jan. 17	Ronceverte	There
Jan. 21	Richwood	There
Jan. 24	Lookout	There
Jan. 28	Rupert	Here
Jan. 31	Alderson	There
Feb. 7	Richwood	Here
Feb. 11	Ronceverte	Here
Feb. 13	Summersville	Here
Feb. 14	Crichton	There
Feb. 18	Alderson	Here
Feb. 20	Lookout	Here
Feb. 21	Talcott	There
Feb. 26	Hinton	There

FOOTBALL SCHEDULE

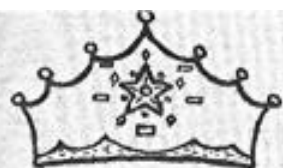
Rainelle	6	Summersville	0
Rainelle	34	Lewisburg	0
Rainelle	13	Lookout	0
Rainelle	20	Alderson	6
Rainelle	13	Ronceverte	14
Rainelle	38	Rupert	0
Rainelle	7	Richwood	0
Rainelle	25	Crichton	7
Rainelle	13	Hinton	21
Rainelle	9	Ansted	0

Total Scores	178	48
--------------	-----	----

Play off for Greenbrier Valley Championship

Ronceverte	13	Alderson	21
Rainelle	0	Alderson	0
Lewisburg	14	Alderson	21

Rainelle and Alderson Co-Champions



QUEEN
of
RAINELLE HIGH SCHOOL
and
ATTENDANTS



SOLOIST



CHORUS

PIANIST

The Student Council



Eddie Zopp, Pres.



James Willard, V-Pres.



Jeanette Nutter, Sec.



Homer Hedrick

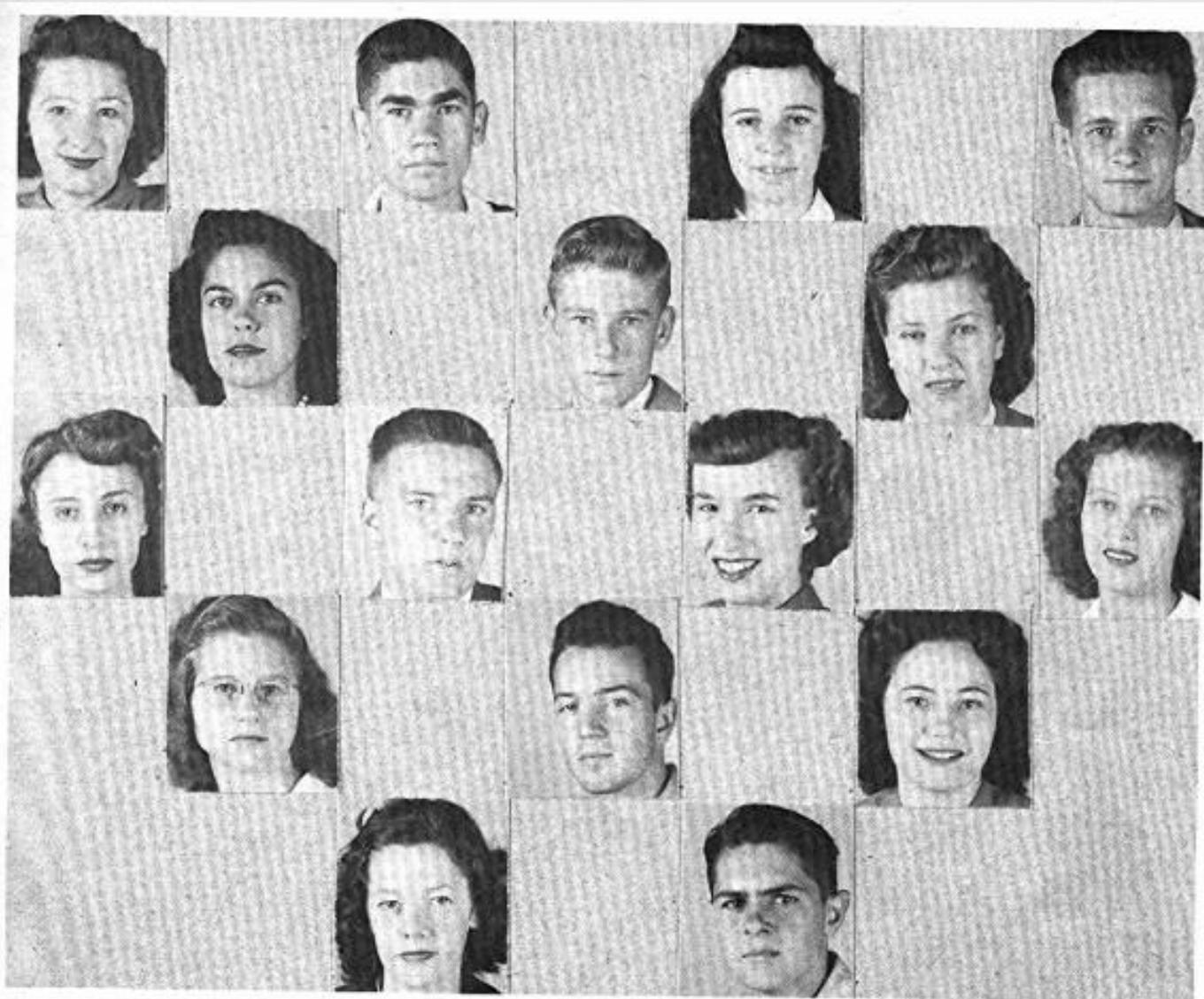
Marvin Slaven

Senior

Junior Class

Dorothy Gutshall-Junior Class, Jackson Huffman-Sophomore Class, Laura Buckannon-9th. Grade, Freddie Landrum-9th. Grade, Arlene Pack-Sophomore Class.

Bobby Parr-7th. Grade, Mary Lowell Gray-8th. Grade, Jimmie Wilt-7th. Grade, Clydell Bowles-8th. Grade, Miss Campbell-Faculty Advisor.



MOUNTAIN RANGER

Editor-in-Chief --- James Willard
 Managing Editor - Blanche Herbert
 Sports ----- Lewis Friar
 and
 Joe Alychick
 Reporters ----- Booky Vance
 Flossie Miller
 Winnie Lepley
 Sylvia Riffe
 Harold Fleshman
 Pearl Bradley
 Business ----- Stanley Shrader
 Advertising ----- Charles Spencer
 Circulation ----- Kay Brown
 Jeanette Nutter
 Typists ----- Mattalea Cales
 June Stoutamyer

ANNUAL STAFF

Editor-in-Chief --- Mattalea Cales
 Assistant Editor-- Jeanette Nutter
 Class Editor----- Sylvia Riffe
 Feature Editor--- Lewis Friar
 Sports Editors --- James Willard
 Joe Alychick
 Activities ----- Blanche Herbert
 Kay Brown
 Circulation ----- Harold Fleshman
 Advertising ----- Charles Spencer
 Stanley Shrader
 Class History ---- Pearl Bradley
 Class Will ----- Flossie Miller
 Class Prophecy -- Arbutus Vance
 Art Editors ----- Winnie Lepley
 June Stoutamyer
 Typists ----- Miss Morgan &
 Typing II Class



NATIONAL HONOR SOCIETY

The John Raine Chapter of the National Honor Society was organized in Rainelle High School in 1940.

Requirements for membership are: No average below a B; good character; a trend toward leadership; Class rank of junior or senior; and a recommendation from class advisor or teacher. Any member failing to live up to requirements is automatically dropped by the society and asked to turn in his membership pin.

The chief aims of the society are to encourage students to greater efforts in school work and increase interest in extra curricular activities.

Mrs. Jayne Wickline is supervisor and sponsor of this society.

Senior members; Lacy Sanford, Margaret Ann Griffith, Clyde Nolan, Mattalea Cales, Eugene Goddard, Alice Mae Walker, and J. B. Hayes.

Junior members: Twyla Cain, Dale Poe, Molly Jackson, Betty Powers, Geraldine Simms, Betty Wray Walker, Donald Smith, Leila Camp, Mrs. Jayne Wickline, and Joanne Augustine.

QUILL AND SCROLL



MARGARET PRESCOTT MONTAGUE CHAPTER

of

QUILL AND SCROLL

INTERNATIONAL HONOR SOCIETY

for

HIGH SCHOOL JOURNALISTS

INSTALLED AT R. H. S. IN 1939

Requirements for membership in this organization are superior work in the staff of a high school newspaper, yearbook, magazine, or handbook; junior or senior classification or post-graduate; upper third of class scholastically; and recommendation by the sponsor governing publication. Local requirements are fifty inches of copy or one hundred inches of advertising and maintenance of scholastic standing after initiation with no grade below a C.

The following members have met the above requirements and are thus eligible for membership in this society: Sylvia Riffe, Pearl Bradley, Stanley Shrader, Blanche Herbert, Jeanette Nutter, Joe Alychick, Mattalea Cales.

POPULARITY



JEANETTE NUTTER

One I'd Like to Date
Best All Around Student
Most Energetic
Biggest Heartbreaker
Best Personality
Always Smiling
Most Popular
Best Looking



EDDIE ZOPP

Best Dressed
Best Physique
Prettiest Legs



NORMA TOWNLEY

Most Likely to Succeed



MARIE ROSEWELL

Best Dancer
Most Conceited
Biggest Show Off



JAMES WILLARD

Most Conceited
Biggest Show Off



REEDA OSBORNE

Best Looking



LEWIS PRIAR

Best Dancer



SYLVIA RIFFE

Biggest Tomboy
Biggest Pest



DELBERT GARRISON

Laziest
Biggest Pest

CONTEST



HOMER HEDRICK

Biggest Eater
Prettiest Hair



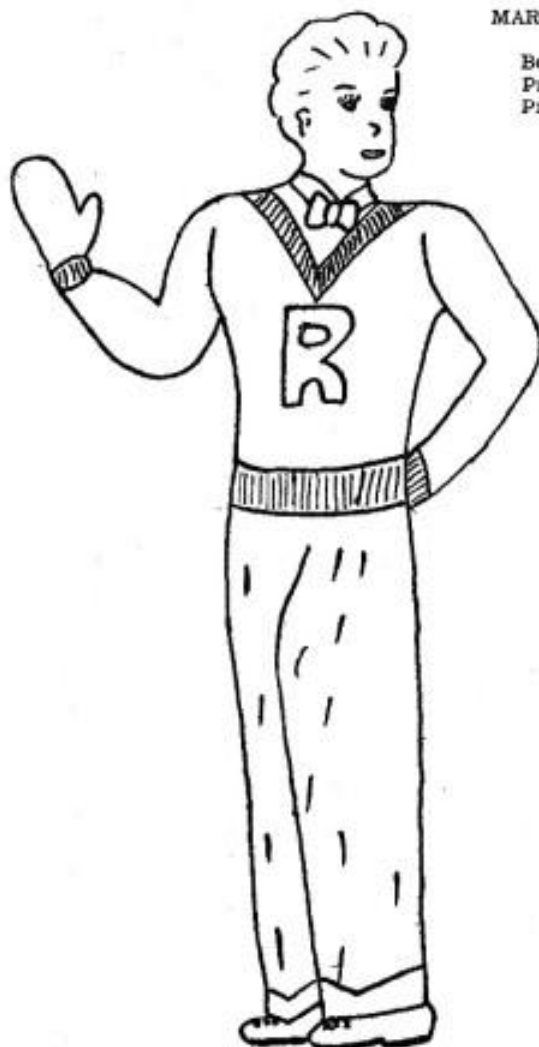
MARGARET GRIFFITH

Best Figure
Prettiest Hair
Prettiest Hands



CHARLES SPENCER

Most Likely to Succeed
One I'd Like to Date
Always Frowning
Most Energetic
Prettiest Eyes
Best All Around Student
Chewing Gum Champ



EUGENE GODDARD

Biggest Mouth
Biggest Feet



BLANCHE HERBERT

Prettiest Legs
Biggest Eater
Biggest Mouth



BOOKY VANCE

Best Dressed



LACY SANFORD

Prettiest Hands



VADA LOU NOLEN

Shyest



AUBREY RICKMAN

Shyest



GLEE CLUB

Mrs. Barnette, Director

- Row 1. Ruby Jean Sanford, Margaret Ann Griffith, Kathryn Brown, Ruby Jean Loudermilk, Hildreth Corron, Muriel Cozort, Pearl Bradley.
- Row 2. Evelyn Staley, Norma Kenny, Ernestine Staley, Vada Lou Nolen, Wylene Carr, Patsy Ocheltree, Mildred Underwood.
- Row 3. Marie Rosewell, Reeda Osborne, Booky Vance, Blanche Herbert, Norma Jo Townley, Jeanette Nutter, Mattalea Cales.
- Row 4. Joan Ann Quick, Flossie Miller, Betty Walkup, Marguerite Rickman, Hazel Williams, Delores Bridges, Betty Wiseman.
- Row 5. Geraldine Simms, Mary Louise Clinebell, Betty Powers, Betty Wray Walker, Leila Camp, Twyla Cain, Peggy Winnings.
- Row 6. Margaret June Davis, Eleanor Bennett, Norma Jean Yaden, Mona Gray Harris, Lena Morrison, Pearl Carr, Nellie Waugh.

LIBRARY

STAFF



Ruby Jean Sanford



Norma Kenny



Beryl Johnson



Polly McChung



Aldereth Cannon



Miss Green



Marie Rosewell



Maribel Cozant



Betty Jean Adkins



Joanne Augustine



Robert Conquest

OFFICE

STAFF



Betty Holkup



Peggy Winnings



Ruby Loudenmiller



Mr. Colman



Ambrose Vance



Ernestine Stoley



Betty Sue Hayes



Mattie Lee Cates



SENIOR PLAY "THE BIG BLOW UP"

Mugsy Morris -----	James Willard
Ellen Parker -----	Mattalea Cales
Cora Johnson -----	Reeda Osborne
Terry King -----	Joe Alychick
Katie Lee -----	Joan Quick
Beans Parker -----	Stanley Shrader
Sandra Field -----	Evelyn Staley
Mrs. Field -----	Patsy Ocheltree
Mr. Field -----	Benny Napier
Melinda -----	Delores Bridges
Margot Richards -----	Kay Brown
Douglas Blake -----	Maxwell Simms
Stage Managers -----	Murial Bryant
	Orland Jones



Blanche Herbert
Pres.



Alice Walker
V. Pres.



Betty Jane Altizer
Sec.



Lois Hoely
Treas.



Joan Gloria
Reporter

PEP CLUB

Nancy Altizer

Helen Astin

Joann Augustine

Joyce Barker

Betty Black

Roberta Bottomly

Laura Jean Buchannon

Ginger Burns

Adrienne Camp

Ann Carr

Shirley Cutlip

Ethel McDaniels

Margaret June Davis

Nancy Davis

Peggy Evans

Coraleen Hallett

Janice Hershberger

Verna Hughart

Molly Jackson

Norma Kenney

Peg Livesay

Nancy Martin

Geneva Moten

Jeanette Nutter

Mary Lou Patton

Sylvia Riffe

Freda Roberts

Eleanor Sanford

Marilyn Sanford

Yvonne Scott

Janet Simms

Betty Wilt

Betty Jo Wiseman

Geneva Underwood

Mildred Underwood

"Booky" Vance

SWEET-HEARTS



Mrs. Mrs.
Buck Buchanan



Mrs. Mrs.
Curtis Scott



Mrs. Mrs.
Ray Hill



Mrs. Mrs.
Quinn Fries



1



2



3



4



5



6



7



8



9



10



11

12



13



15



16



14



17



18



19



22



24



20



25



21



23





Full of mischief



Fair Catch



Too Old to be Spanked







SCHOOL CALENDAR

SEPTEMBER

- 3---First day of school and everyone is trying desperately to straighten out his schedule.
- 4---Senior order class rings
- 6---Rainelle is off to a good start with the first game of the season ending in a victory over Summersville, 6-0.
- 7,8---Happy day! First week-end of the new school term.
- 9---Student Council is organized. Eddie Zopp, "Friday" Willard, and Jeanette Nutter are elected officers.
- 10---Seniors order calling cards and announcements.
- 12---Mt. Ranger staff is chosen. "Friday" Willard is editor and Blanche Herbert is assistant editor.
- 13---Lewisburg is downed by the Rangers, 34-0.
- 17---Charles Spencer is elected president of the Senior class, Stanley Shrader is vice president, and Reeda Osborne is secretary and treasurer.
- 18---Mona Gray Harris and Ethel McDaniels entertain members of the P.T.A. at their first meeting.
- 19---First dance of the season is sponsored by the Junior class.
- 20---Patsy Ochletree takes that fatal step.
- 24---"Peg" Evans is elected cheerleader at the first assembly of the year.
- 25---Mrs. Wilson is honored on her birthday with a party given by the Journalism class.
- 27---Rainelle is again winner as they beat Lookout, 13-0. and the high school is given a holiday because of a 100 per cent subscription for the Mt. Ranger.
- 30---First edition of the Mt. Ranger is out.

OCTOBER

- 1---Pictures are taken. Oh! those senior boys and their ties!
- 2---Juniors present an assembly. Thank you, Juniors, it was very good.
- 4---Rainelle is winner over Alderson, 20-6.
- 11---Rainelle is defeated by Ronceverte by the heart-breaking score of 13-14.
- 16---Members of the P. T. A. are entertained by the "Coronation Group."
- 18---A really big day! Homecoming game ending in a victory over Rupert, Alice Mae Walker is crowned queen at the coronation dance following the game, and the football squad and cheerleaders are given a banquet by the Mothers.
- 25---Teachers attend S.E.A. meeting, school has holiday. Rainelle beats Richwood to the tune of 7-0.
- 30---Rainelle Alumni Association is organized. October issue of the Mt. Ranger is out.
- 31---Al Capp's comic strip, "Lil Abner," comes to life at the Halloween dance sponsored by the Junior class.

NOVEMBER

- 1---Rainelle wallops Crichton, 25-7.
- 2---"Tag Day" is great success.
- 4---Construction is started on the much talked about Athletic Field.
- 6---Journalism class has a party using "Friday" Willard's birthday as an excuse this time.
- 8---Rainelle is again defeated, this time by Hinton, 21-13.
- 10,16 American Education Week.
- 13---Parents and Teachers have their regular monthly meeting.
- 14---Ansted goes down at the hands of the mighty Maroon and gold.
- 15---Alderson and Ronceverte settle the three-way-tie by playing a play-off game on the Rainelle field. Alderson wins by the score of 20-13.
- 18---Mr. Shawver's shop strikes for better conditions.
- 19---Seniors present hilarious comedy, "The Big Blow-up."
- 20---Shop still on strike.
- 21---Charles Spencer is acting as counselor, advisor, and lawyer for the strikers.
- 22---Strike is settled.
- 25---Rainelle is host to principals.
- 26---Mrs. Wilson Resigns.
- 28---Journalism class has party, this time for no good reason.
- 29---Mrs. Barnette resigns.

DECEMBER

- 3---Bennie Black takes first place in the annual amateur contest.
- 5---Major Wood speaks in the assembly on the U.S.O.
- 6---Thank the V.F.W. for the enjoyable evening we spent dancing to the music of Owen Crickard and his lads.
- 9---Seniors have a class party. Class rings are in.
- 10---The entire day is spent exchanging, shining, and proudly displaying rings.
- 12,13---Classes for food handlers are held in high school auditorium.
- 18---Grade school gives Christmas program for P.T.A. Public Speaking class presents an assembly for the high school.
- 19---You guessed it! Journalism class has another party.

OF 1946-47

- 20---Christmas vacation begins; we love you Santa Claus!
27---The lights are low, the crowd is hushed as the dreamy strains of music float through the air. You're right, we're dancing away our lonely hours underneath the mistletoe.

JANUARY

- 1---Hello, 1946!
2---Back to school after a most enjoyable vacation.
3---Rainelle loses first game of the season to Summersville, 48-51.
7---Crichton falls to the mighty Ranger five.
9---Rainelle tips Hinton's applecart, 56-38.
11---Rupert is trounced, 68-20.
14---Rainelle wins 85-46 over Talcott.
15---J. Alfred Taylor speaks at P.T.A. meeting.
16---Rainelle Jr. High takes Beckley Jr. High in a thrilling 23-27 battle.
17---High-flying Rangers take their fifth straight win 60-55 over the Ronceverte Bull dogs. Charles Spencer gets so hungry he can't wait for lunch; eats jar of paste in journalism.
20---Mrs. Fleshman is wondering what happened to the paste she bought for use in the year book; Charles Spencer has a pasty look.
21---Rainelle falls to a mighty Richwood five, 33-63.
24---The Rangers are again defeated, this time by Lookout, 52-65.
28---Rainelle Jr. High team play Wilson Jr. High here in the afternoon. Rangers swamp Rupert a second time, 78-23.
31---Ranger five meet the Alderson Indians on the Alderson floor.

FEBRUARY

- 3---G.M.S. Captains and Midgets meet Rainelle Jr. Varsity and Jr. High here.
4---Rainelle Jr. High Vs. Crichton Jr. High.
6---Jr. High and Jr. Varsity play Renick Jr. High and Jr. Varsity to benefit the Infantile Paralysis fund.
7---Rainelle quintet meets Richwood a second time.
11---Rangers meet the Alderson Indians on home floor.
12---Charles Spencer and Jeanette Nutter have another argument.
13---Maroon and Gold Rangers play Summersville again.
14---It's Valentine's Day! All these pretty lacy valentines we see floating around show that Rainelle has its share of lovers.
15---Crichton game.
17---Jr. High and Jr. Varsity play Beckley Jr. High and Jr. Varsity at Beckley.
18---Rangers take the Alderson Indians on again.
19---P.T.A. has Mr. Montgomery as guest speaker.
20---Last home game of the season is played with Lookout.
21---Rainelle plays Talcott there.
26---Sandstone Jr. High play the Rainelle Jr. High here in the afternoon. Rangers play last game of the season at Hinton.
28---Government classes take trip to Charleston. More fun! And educational to!

MARCH

- 1---The annual Greenbrier Valley Conference play off game is held.
6,7,8---Sectional tournament is held at Ronceverte.
12---High school is shown educational picture, "America the Beautiful."
14---State Jr. High tournament is held in Beckley.
14,15---Regional tournament is held in Beckley.
20,21,22---State tournament is held in Morgantown.

APRIL

- 1---April Fool's Day! Does it have any significance to you?
11---County principals meet at Lewisburg.
16---Bookie Vance's 17th birthday. At last she is 17!
18,19---Principals hold meeting in Morgantown.

MAY

- 2---Juniors present the annual Junior-Senior Banquet. Never was there such a night! Thank you juniors, we'll never forget it!
6---Seniors take over the classes for a day and afterwards the students appreciate their teachers more.
18---Baccalaureate Service at the Rainelle Methodist Church. It won't be long now!
22---Commencement. This is THE DAY! The turning point in our lives. May the memories in this yearbook be forever cherished, as we march out of school life into life's school. Congratulations, Seniors!

MOSSER'S DRUGS

MR. AND MRS. K. W. MOSSER PERSONALLY

WISH THE SENIORS

SUCCESS

Prescription
Druggist

Phone
4281

EAST RAINELLE

VALLEY FINANCE
COMPANY

WE WISH YOU THE BEST
OF LUCK SENIORS!

Compliments of

F. L. FLINT
GENERAL MERCHANDISE
and
WALLPAPER

DIAL 4311

ALPINE

HERE'S TO YOUR SUCCESS

★ ★ ★

Shows Are Your Best Entertainment

EAST RAINELLE

The RAINELLE DEPARTMENT STORE

SEE OUR FULL LINE OF APPLIANCES

FRIGIDAIRES

R C. A. RADIOS

WARM MORNING HEATERS

TELEPHONE 2271

**WE EXTEND OUR BEST WISHES FOR
LUCK AND SUCCESS TO THE SENIORS**

OF 1947

TOP-QUALITY
AUTO SUPPLIES

AT

FIRESTONE SALES

E. RAINELLE

CONGRATULATIONS
SENIORS

PIONEER LUNCH

J. F. WEBER

Prop.

PHONE

2301

BEST WISHES
From
CLASS OF '47

"Always Behind
the
Rangers"

★ ★ ★

BOOST THE
ATHLETIC FIELD

COMPLIMENTS
OF
**HUNDLEY'S DRUG
STORE**

Fountain Service

Prescription Specialists

BON VOYAGE SENIORS!

RICHMOND'S FLOWER SHOP

PHONE 5521

E. RAINELLE

LUCK — SUCCESS — HAPPINESS

THE RAINELLE BARBER SHOP

REX. S. ALDER FURNITURE CO.

WISHES
SUCCESS ALWAYS
SENIORS

EAST

RAINELLE

CHIC ARRAY SHOP
QUALITY FEMININE APPAREL
Dial 3871

EAST

RAINELLE

CONGRATULATIONS

to the

SENIOR CLASS OF '47

THE PIONEER HOTEL

DIAL 2531

RAINELLE

...BOLEY CHEVROLET...

COMPANY

HERE'S TO YOUR SUCCESS

SENIORS

E. RAINELLE

DIAL 3301

Good Luck and Best Wishes

to the

CLASS OF '47

W. W. MAC COMPANY

MRS. CORA BOGGS

MANAGER

MEET YOUR FRIENDS

— AT —

BAKER'S LUNCH

KENNY BAKER, PROPRIETOR

BEST WISHES SENIORS

from

SLAVIN'S SHOE
HOSPITAL

COMPLIMENTS

of

ROYAL CAFE

EAST

RAINELLE

RAINELLE

INSURANCE

AGENCY

DIAL4411

MEET YOUR FRIENDS

at

THE IDLE HOUR

K. BOGGS

PROP.

G. C. MURPHY

COMPANY

DIAL

2361

AMERICAN

SERVICE

STATION

CLAUDE VANCE JR.



"Winne" Lyley

Lobbie and Cere	Best of luck
-----------------------	-----------------